



**SCHRADER**GROUP

An aerial photograph of Knapp Elementary School, showing the main building with a white roof, a large parking lot filled with cars, and surrounding greenery and residential areas.

# **NORTH PENN SCHOOL DISTRICT**

## **Knapp Elementary School**

### **FACILITY FORUM**

### **Knapp Elementary School Renovations & Addition**

**09 April 2019**



# KNAPP ES ASSESSMENT HIGHLIGHTS



NORTH PENN SCHOOL DISTRICT

# KNAPP ES ASSESSMENT HIGHLIGHTS

## **SITE**

- ADA upgrades
- Paving failure
- Drainage to correct ponding water
- Repair concrete curbing and sidewalks
- Create secondary access drive to site

## **ELECTRICAL AND LIGHTING**

- Replace all lighting interior & exterior
- Replace most of the power distribution system (switchboards and panelboards)
- Add second transfer switch and new full building generator

## **BUILDING**

- ADA upgrades
- Roofing repair – flashing systems
- Windows and doors to be replaced
- Masonry joint sealants to be replaced
- Interior finishes to be replaced
- Security vestibule and office sequence

## **HVAC**

- Replace much of the HVAC equipment
- Hot water plant and boilers to be replaced
- Provide air-conditioning & dehumidification throughout building
- Replace HVAC controls system with fully integrated District-wide DDC system

# KNAPP ES ASSESSMENT HIGHLIGHTS

## **PLUMBING & FIRE PROTECTION**

- Replace all plumbing fixtures with ADA compliant water saving devices
- Upgrade plumbing drainage systems
- Verify Lead Free requirements for potable water plumbing systems.
- Provide high efficiency gas-fired water heaters.
- Provide a sprinkler fire protection system.

## **SAFETY & SECURITY**

- Increase CCTV quantities with night vision
- Replace fire alarm system
- Replace all safety and security devices

## **TECHNOLOGY**

- Replace data cabling system
- Update all AV technology
- Replace technology systems

# 21<sup>st</sup> CENTURY LEARNING

## LEARNING TYPE

- TRADITIONAL INSTRUCTION
- ONE-ON-ONE
- RESEARCH/ INVESTIGATE
- MAKE/ DEVELOP
- PRESENT/ REPORT OUT
- COMMUNITY/ INTERNAL COMMUNITY

## SPACE TYPE

- MULTIPLE SIZED INSTRUCTIONAL SPACE
- SMALL GROUP WORK SPACES
- OPEN RESOURCE/ MEDIA CENTERS
- LARGE GROUP PROJECT AREAS
- PRESENTATION AREAS
- FULL-SIZED ACTIVITY AREAS

# 21<sup>st</sup> CENTURY LEARNING

A

MULTIPLE SIZED INSTRUCTIONAL SPACE

B

SMALL GROUP WORK SPACES

C

OPEN RESOURCE/ MEDIA CENTERS

D

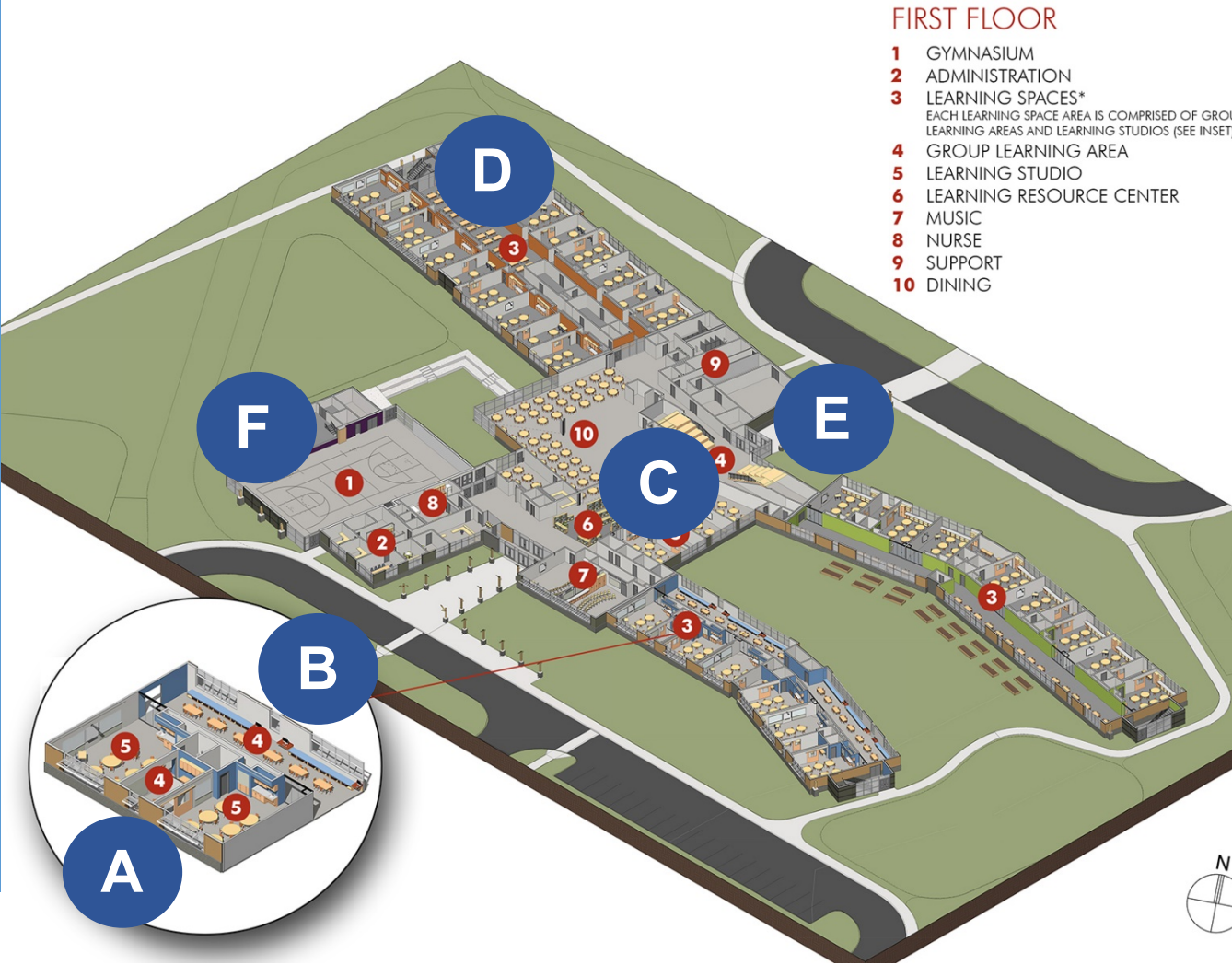
LARGE GROUP PROJECT AREAS

E

PRESENTATION AREAS

F

FULL-SIZED ACTIVITY AREAS



# changing learning environments

example spaces – elementary school

A

MULTIPLE SIZED  
INSTRUCTIONAL SPACES



C

OPEN RESOURCE/ MEDIA  
CENTERS



E

PRESENTATION AREAS



B

SMALL GROUP WORK SPACES



D

LARGE GROUP  
PROJECT AREAS

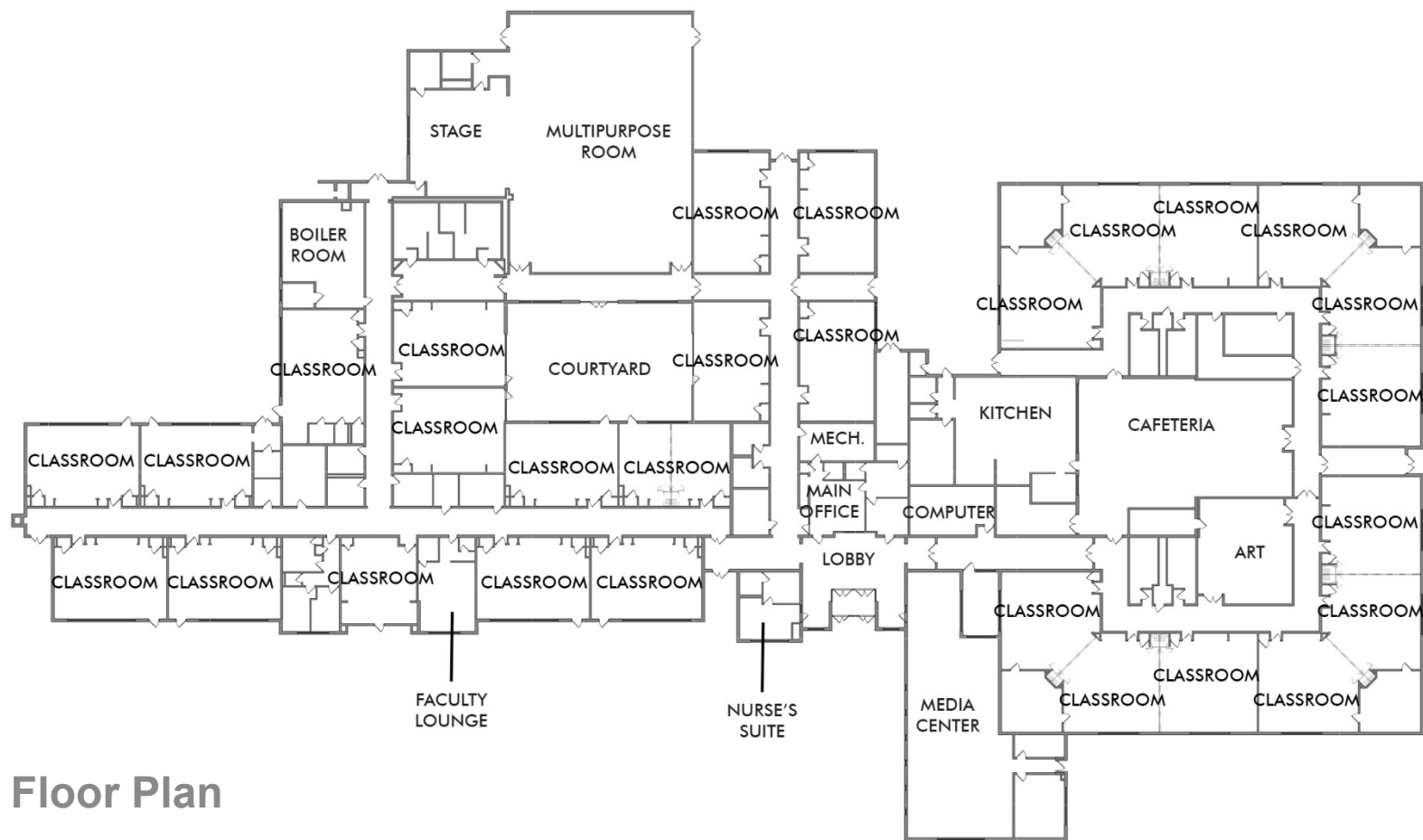


F

FULL-SIZED ACTIVITY AREAS



# KNAPP ES EXISTING PLAN



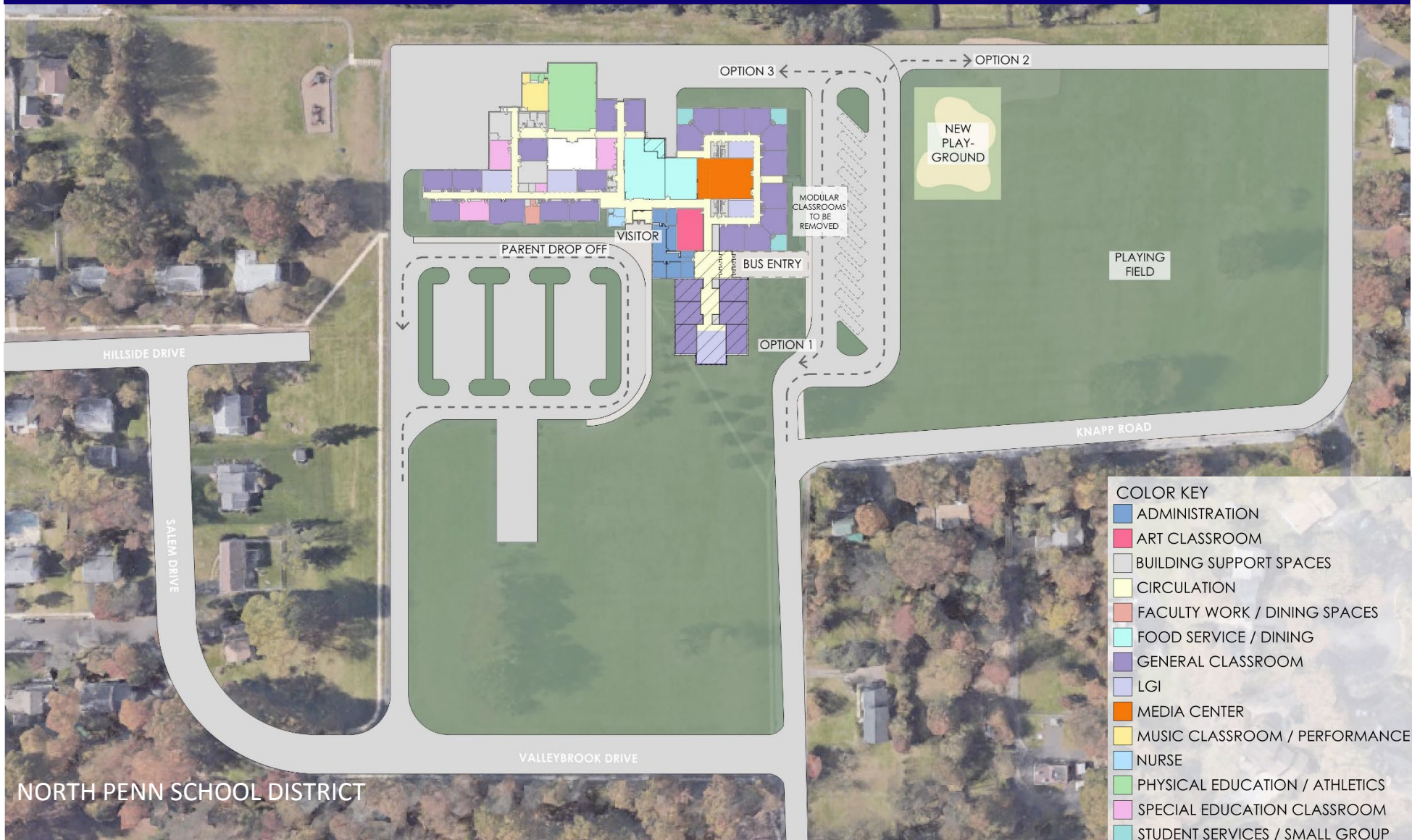
Floor Plan

# KNAPP ES EXISTING SITE PLAN



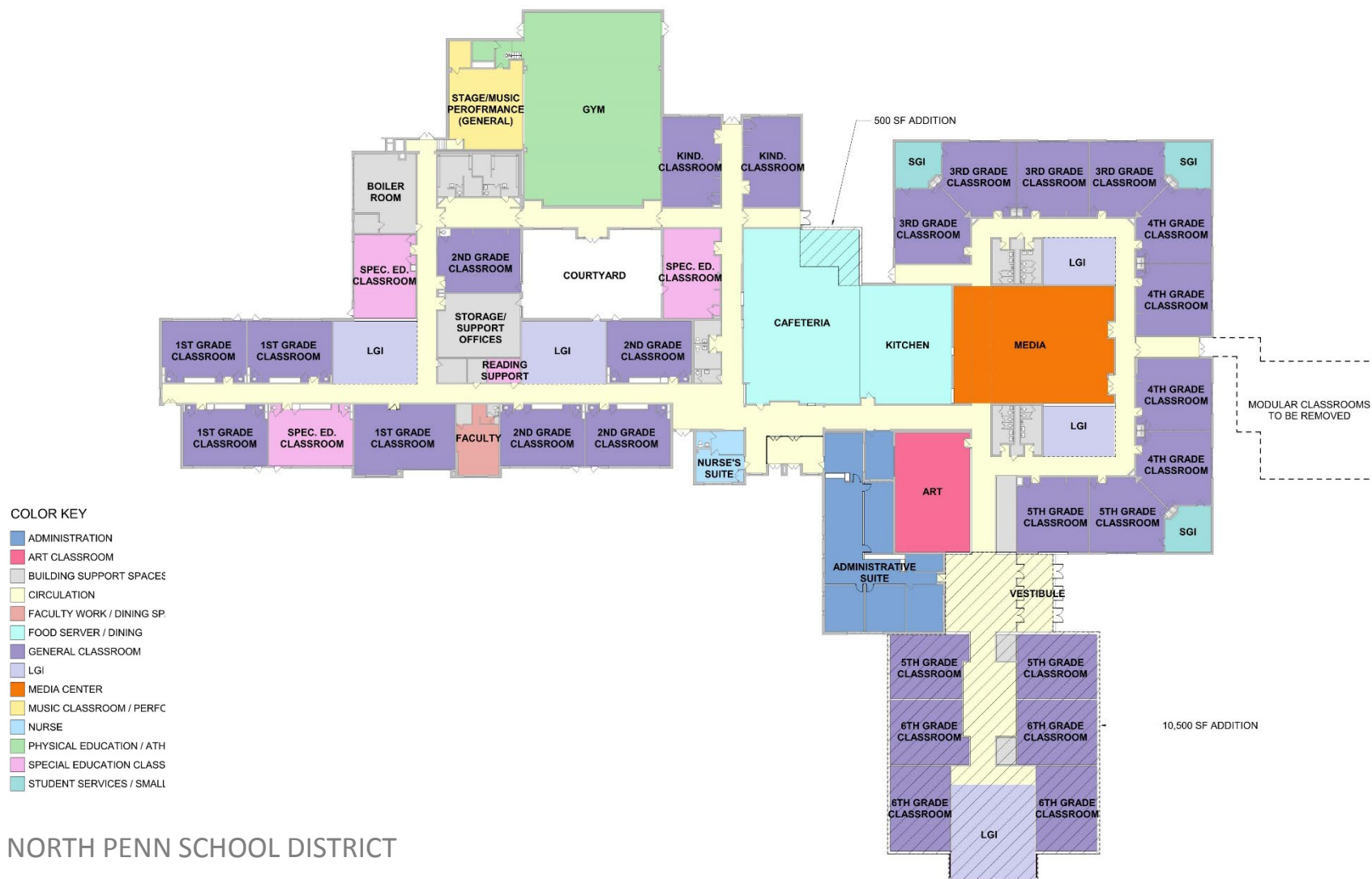
Site Plan

# OPTION #1 Concept Site Diagram



# OPTION #2 Concept Site Diagram







# KNAPP ES CONCEPTUAL BUDGET

## Renovations & 6 CR Addition

(modular replacement plus classrooms lost to right-sizing)

Concept Budget Estimate

\$ 24-26 Million

*\* Estimate to the midpoint of construction in 2021*



# PROPOSED SCHEDULE

PHASE	TIMELINE
DESIGN PROCESS	March 2019 – Feb 2020
PERMITTING PROCESS	April 2019 – Feb 2020
BIDDING PROCESS	Feb 2020 – April 2020
CONSTRUCTION – NEW	April 2020 – Dec 2020
CONSTRUCTION – PHASED RENOVATIONS	Jan 2020 – July 2022
COMPLETE SITE CONSTRUCTION	Jun 2022 – Aug 2022